



V363F-FE

V363F-FE

PRESSIONE

- Pressione di esercizio: _____ da 1 a 6 bar

PORTATA (vedi diagramma sotto)

- Portata di servizio (Delta P = 1 bar): _____ 36 mc/h

- Portata di servizio (Delta P = 2 bar): _____ 51 mc/h

- Portata di controlavaggio (Delta P = 1 bar): _____ 40 mc/h

- Portata di controlavaggio (Delta P = 2 bar): _____ 58 mc/h

- Portata lavaggio rapido (Delta P = 1 bar): _____ 28 mc/h

- Portata lavaggio rapido (Delta P = 2 bar): _____ 40 mc/h

TEMPERATURA DI ESERCIZIO: _____ da 5 a 40° C

MATERIALE CORPO VALVOLA: _____ ABS + FV

POTENZA ELETTRICA _____ vedi timer

DIMENSIONI

- Attacchi: _____ 2 3/4" maschio (60 mm)

- Montaggio: _____ laterale

RACCORDI INGRESSO/USITA DISPONIBILI

Raccordo pvc 2 3/4" - 2" femmina

- Raccordo ottone/pvc 2 3/4" - Ø 63 mm incollaggio

CERTIFICATI

- Conformità al DM 174 del 06/04/2004

- 2002/95/EC (RoHS)

PRESSURE

- Operating Pressure: _____ from 1 to 6 bar

FLOW RATE (see flow chart below)

- Service Flow rate (1 bar drop): _____ 36 mc/h

- Service Flow rate (2 bar drop): _____ 51 mc/h

- Backwash flow rate (1 bar drop): _____ 40 mc/h

- Backwash flow rate (2 bar drop): _____ 58 mc/h

- Fans rinse flow rate (1 bar drop): _____ 28 mc/h

- Fans rinse flow rate (2 bar drop): _____ 40 mc/h

OPERATING TEMPERATURE: _____ from 5 to 40° C

VALVE MATERIAL: _____ ABS + FV

ELECTRICAL RATE _____ see timers

DIMENSIONS

- Connections: _____ 2 3/4" male (50 mm)

- Mounting: _____ lateral

PIPING FITTING IN/OUT AVAILABLE

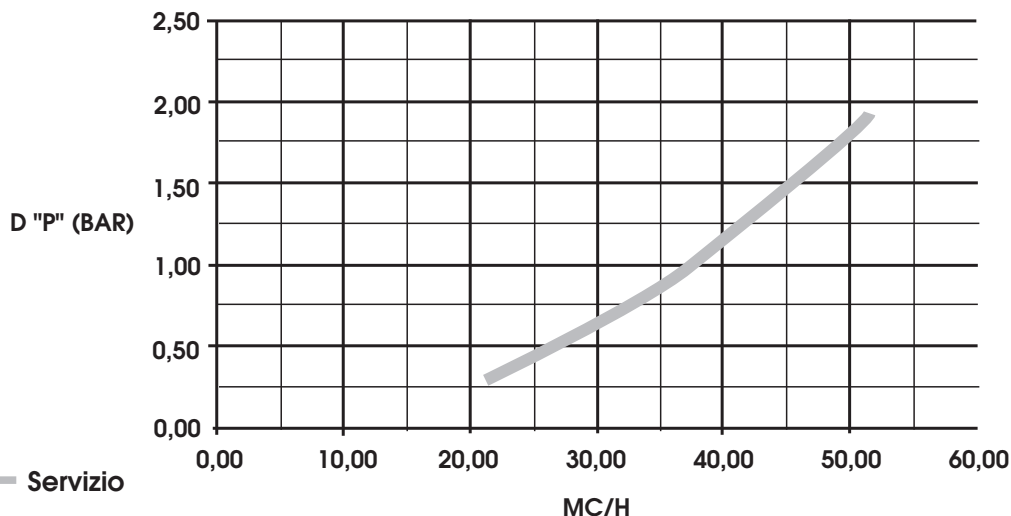
- Pvc fittings 2 3/4" - 2" female

- Brass/pvc fittings 2 3/4" - Ø 63 mm to be glue

CERTIFICATES

- DM 174 DD April 06, 2004 compliance

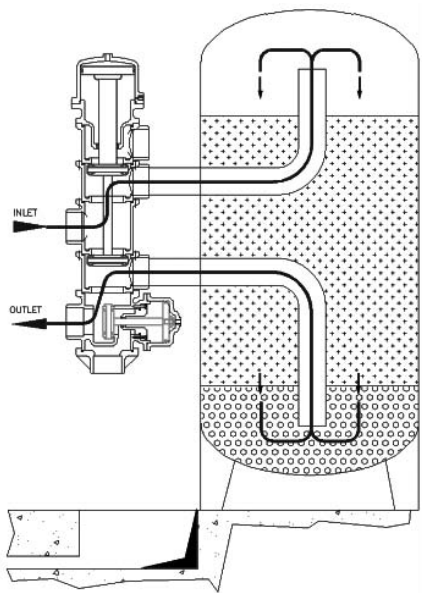
- 2002/95/EC (RoHS)



SCHEMI DI FLUSSO/FLOW DIAGRAMS

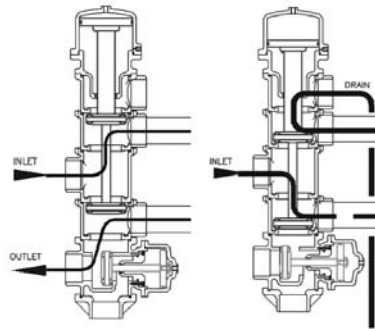
1

SERVIZIO/SERVICE



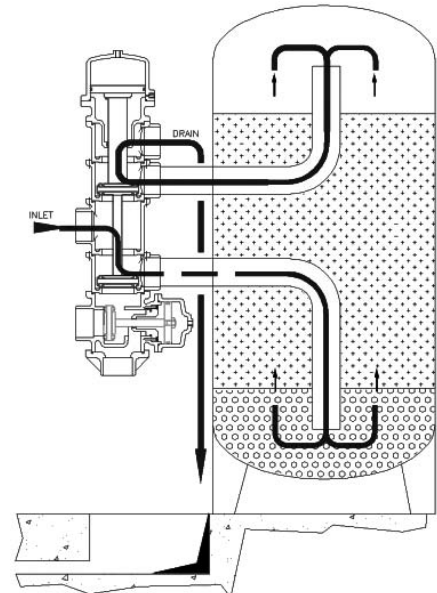
--

TRANSIZIONE/TRANSITION



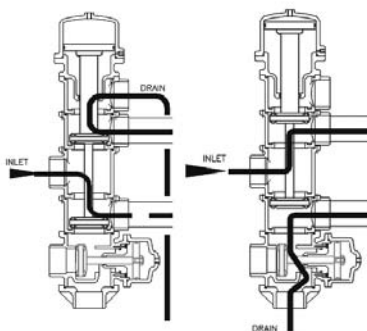
2

CONTROLAVAGGIO/BACHWASH



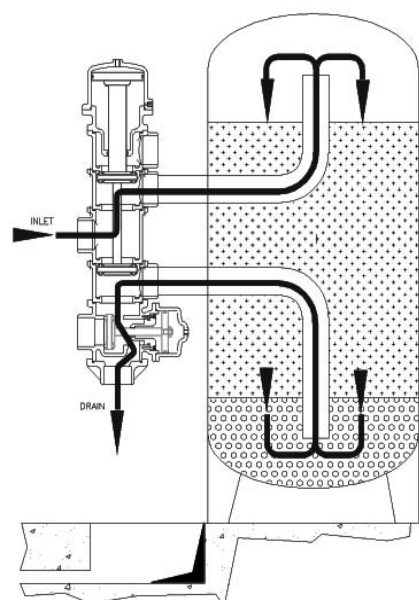
--

TRANSIZIONE/TRANSITION

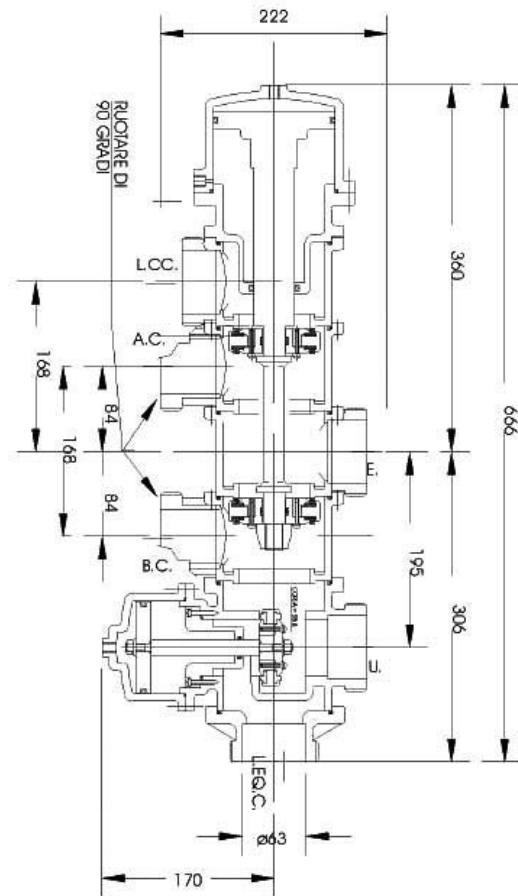


3

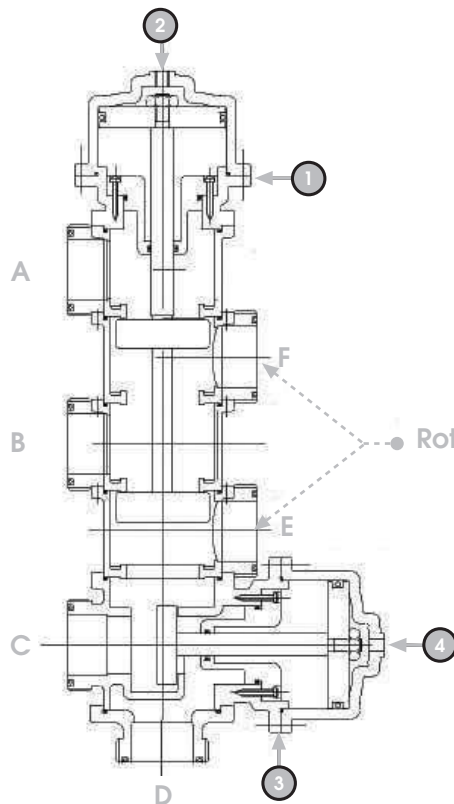
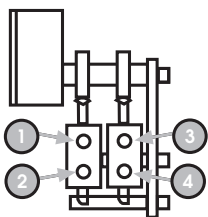
LAVAGGIO RAPIDO/FAST RINSE



DIMENSIONI/DIMENSIONS



COLLEGAMENTI CON TIMER 2 PILOTI/CONNECTIONS WITH 2 PILOTS TIMER



- A** = scarico acqua di lavaggio / Rinsing water drain
- B** = entrata acqua da filtrare / Inlet water to be filtered
- C** = uscita acqua filtrata / filtered water outlet
- D** = scarico equi-corrente / co-current water drain
- E** = collegamento basso colonna / Bottom column connection
- F** = collegamento alto colonna / High Column connection